



STAY
POWERED UP
ALWAYS



”

*POWERING
THE FUTURE*

TABLE OF CONTENTS

01. Our Journey – The Story of RMC Switchgears

02. Get to Know Us – Who We Are and What Drives Us

03. Milestones that Matter – A Timeline of Achievements

04. Vision, Mission & Core Values – Anchoring Our Future

05. Engineering Excellence – Our Manufacturing Capabilities

06. Innovations in Action – Our Unique Products

a. Electrical Products Division

- i. Smart Energy Meter Enclosures
- ii. Overhead Distribution Boxes
- iii. Underground Network Pillar Boxes
- iv. Transformer Distribution Boxes
- v. FRP Fencing Solutions
- vi. V-Cross Arms

b. Electrical Projects Division

- i. Transmission Lines and Grid Substations
- ii. Anti-Theft Metering Solutions
- iii. AIS/GIS Substations
- iv. Underground Electrical Networks

c. Renewable Energy – Solar Division

- i. Solar IPP Ventures
 - ii. Turnkey Solar Power Plants
 - iii. Solar Structural Solutions
 - iv. Solar Electrical Panels
-

07. Building the Future – Our Projects Portfolio

08. Partners in Progress – Our Valued Clients

09. Awards & Certifications – Recognized for Excellence

10. Committed to Sustainability – Our Social Responsibility

11. The Leaders Steering RMC's Success – Meet Our Team

12. Echoes of Trust – Client Testimonials

13. A Bold Tomorrow – Our Future Growth Plans



THE STORY OF RMC SWITCHGEARS LIMITED

In the heart of India, where power often determines the pace of development, a small but ambitious company was born in 1994. RMC Switchgears Limited was not just a business venture; it was a response to a pressing need. Villages, towns, and cities across the country faced an unseen but dangerous enemy—electrical theft and electrocution. Lives were at risk, and communities were left vulnerable.

This wasn't just about business; it was about **saving lives** and **building a safer tomorrow**. RMC began its journey with a mission to create **tamper-proof, fire-resistant, and theft-deterrent solutions**. The goal was simple but powerful: to ensure that every household, every transformer, and every grid station could operate without fear of accidents or theft.

The founders of RMC saw a deeper purpose. In every junction box, meter enclosure, and feeder pillar, there was a commitment to **social responsibility**. They believed that **access to safe electricity was a right, not a privilege**. As the company grew, so did its ambition to connect with communities, educate about electrical safety, and **bring power to the remotest corners of the country**.

Through innovation and hard work, RMC's solutions began transforming not just infrastructures but also lives. Projects aimed at replacing old, hazardous electrical fittings with modern, insulated, and **eco-friendly alternatives became the backbone of their success**. RMC's products, like **FRP fencing for transformers and anti-theft metering enclosures**, prevented accidental electrocutions and power thefts, making homes and public spaces safer.

By addressing these pressing social issues, RMC isn't just manufacturing products—it is **weaving a narrative of trust, responsibility, and care for the communities it serves**. Today, as RMC stands tall as an industry leader, the essence of this story remains the same. The company continues to **power dreams, protect lives, and energize the future of countless families across India**.



OUR OBJECTIVES: AT THE CORE OF EVERYTHING WE DO

At RMC, our objectives extend beyond the boundaries of manufacturing and innovation. We are driven by a profound sense of duty to create safer environments, reduce energy wastage, and uplift communities. Our commitment is to:

- 01. Prevent Electrical Accidents and Theft**
Develop solutions that eliminate the risks of electrical theft and electrocution, safeguarding lives and ensuring uninterrupted power.
- 02. Champion Renewable Energy and Sustainability**
Foster long-term growth by embracing solar power and sustainable practices, contributing to a cleaner planet for future generations.
- 03. Forge Stronger Connections**
Build enduring partnerships with clients, collaborators, and communities, reinforcing trust and mutual progress.

With over **800,000 sq. ft. of cutting-edge manufacturing space** and a passionate workforce, RMC blends electrical innovation with solar energy advancements, propelling India's infrastructure forward.

RMC Switchgears Limited – Powering Dreams, Energizing the Future.

KEY MILESTONES: A JOURNEY OF RELENTLESS PROGRESS

1994 ▶

A Vision is Born

RMC Switchgears is founded with a modest 5,000 sq. ft. facility, driven by the goal of transforming electrical distribution.

1998

First Breakthrough Contract

RMC secures its first meter box contract, marking a pivotal moment and laying the foundation for future growth.

2000 ▶

Expanding Horizons

RMC establishes itself as an OEM supplier for major meter manufacturers, signaling growth and industry recognition.

2003 ▶

A Breakthrough in Rajasthan

Our first major order for meter box supply sets the stage for greater expansion.

2004 ▶

Maharashtra Joins the Movement

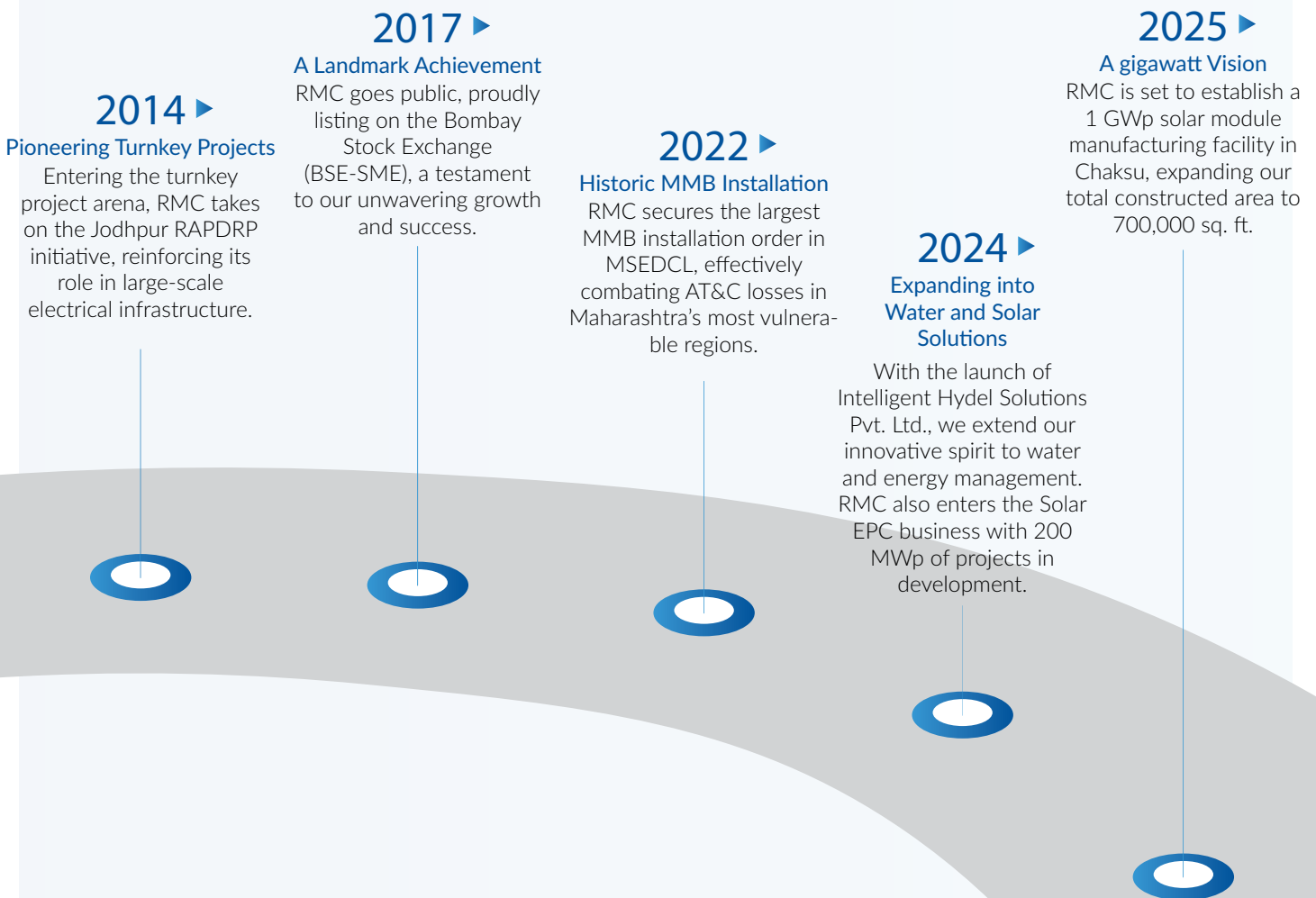
New state, new possibilities – RMC's footprint grows with an order from Maharashtra for electrical enclosures.

2008 ▶

Strengthening Foundations

A state-of-the-art 75,000 sq. ft. manufacturing plant rises in Chaksu, Jaipur, amplifying production and capacity.

Every milestone in our journey tells a story of resilience, determination, and innovation. Each step reflects our unwavering mission to electrify lives, enhance safety, and build a legacy of trust.



OUR VISION, MISSION & CORE VALUES

At RMC, we don't just build products; we build legacies of trust, safety, and innovation. Our vision and mission reflect our unwavering dedication to powering the world with sustainable, efficient, and secure energy solutions.

Our Vision:

To lead the global transition towards **smart, secure, and sustainable energy solutions** by redefining the standards of excellence and innovation in switchgear and renewable energy sectors.

We envision a world where electricity is not only accessible but also **safe, theft-free, and environmentally responsible**. Through groundbreaking technology and relentless innovation, we aim to shape a future where communities thrive on reliable power and cleaner environments.

Our Mission:

1. **Pioneering Innovation:** Deliver high-quality, cost-effective, and advanced solutions in switchgear and solar sectors that drive safety, efficiency, and sustainability.
2. **Empowering Communities:** Facilitate the transition to renewable energy by offering reliable, eco-friendly, and customized solutions tailored to diverse client needs.
3. **Commitment to Safety:** Eliminate electrical theft and prevent electrocutions through our tamper-proof and fire-resistant products.
4. **Driving Sustainability:** Actively promote solar energy adoption, green technologies, and sustainable practices that benefit the planet and future generations.



OUR CORE VALUES – GRACE

Our values are more than principles—they are the driving force behind our every decision, guiding us to create impactful solutions and foster strong partnerships.

G – Growth-Oriented:

We believe in continuous improvement, innovation, and staying ahead of the curve. Our goal is not just to grow but to uplift communities and clients through groundbreaking solutions.

R – Responsibility:

We are dedicated to our social, environmental, and ethical responsibilities. From minimizing carbon footprints to safeguarding lives through our products, every action reflects our accountability.

A – Adaptability:

In a rapidly evolving world, we embrace change and agility. We adapt to new technologies, market needs, and industry shifts to provide the best solutions

C – Customer-Centric:

Our clients are at the heart of everything we do. We listen, understand, and deliver solutions that exceed expectations—building long-term relationships rooted in trust and performance.

E – Excellence:

Excellence is not a destination but a journey. We strive for perfection in design, manufacturing, and execution, ensuring every product we deliver stands the test of time.

INFRASTRUCTURE HIGHLIGHTS

WHERE INNOVATION TAKES SHAPE

At RMC, our infrastructure is the heartbeat of innovation, precision, and excellence. Every square foot of our advanced manufacturing facilities reflects our commitment to quality, efficiency, and the relentless pursuit of engineering brilliance.

A GLIMPSE INTO OUR STATE-OF-THE-ART FACILITIES:

- **India's First Fully Automated SMC Compounding Machine:**
Leading the charge in advanced material processing, our automated SMC machine ensures unmatched consistency, speed, and quality in every product we create.
- **High and Low-Capacity Compression Molding Machines:**
Whether handling intricate designs or large-scale production, our molding machines guarantee flawless execution, setting new standards for durability and performance.
- **Injection Molding and Robotic Welding:**
Precision is paramount. Our cutting-edge injection molding and robotic welding units craft products that exemplify strength, accuracy, and innovation.
- **CNC Turret Punch Press & CNC Drilling/Punching:**
Equipped to handle complex designs with microscopic precision, our CNC systems empower us to meet the diverse needs of our clients with flawless craftsmanship.
- **Conveyor-Based Powder Coating Facility (7-Tank Process):**
Longevity begins with protection. Our advanced powder coating process not only enhances durability but ensures our products withstand the harshest environments.
- **In-House BIS Certified Testing Laboratory:**
Every product is rigorously tested to exceed industry benchmarks. Our BIS-certified lab guarantees safety, reliability, and peace of mind.
- **Innovation and R&D Center:**
The future is built today. Our dedicated R&D facility explores new frontiers in electrical, chemical, and electronic engineering, driving innovation that shapes tomorrow's energy landscape.



Need pictures

ANNUAL PRODUCTION CAPACITY – SETTING NEW BENCHMARKS:

15,000 MT of SMC Compound annually

The backbone of our durable enclosures and innovative designs.

600,000 Units of Deep Drawn Enclosures

Precision-engineered for strength and resilience.

100,000 Units of Fabricated Enclosures

Crafted to meet customized and large-scale needs.

20,000 MT of Solar Structures

Supporting the growth of renewable energy infrastructure.

1,000 MWp of Solar Modules

Accelerating the transition to green energy across India and beyond.

From design to delivery, our infrastructure represents the perfect blend of technology, expertise, and visionary thinking—ensuring that every RMC product not only powers but protects and transforms the spaces it serves.

INNOVATIVE SOLUTIONS

for a Sustainable Future

RMC offers a comprehensive range of products tailored for various industries

METER BOX FOR ENERGY METER

Features

- IP Level from IP-33 to IP-65, Push Fit Type Locking System and Sensor System, with Louvers.
- Modem Mounting Arrangements, TTB, CT's Applicable Standards are IS : 13947 (part-1) for Ingress Protection, IS:13410 for SMC Materials, IS:14772 for Enclosures.

Application

- METER BOX Single/Three Phase whole current meters & CT operated meters
- LT/CT/HT/AMR METER BOX
- MULTI METER BOX Single/Three Phase multi meters

Material

- SMC and BMC
- Polycarbonate
- Mild Steel (Deep Drawn & Fabrication) v fire-resistant.



DISTRIBUTION BOX

Features

- Protected with INGRESS protection till IP-65
- The bus bar arrangements :- bare, insulated & spring loaded & Switchgears like MCB's or MCCB's
- Applicable Standards - IS:13947(part-1) for ingress protection, Is:13410 for SMC Materials, IS:14772 for Enclosures, IS:8623 for temperature rise.

Application

- METER BOX Single/Three Phase whole current meters & CT operated meters
- LT/CT/HT/AMR METER BOX
- MULTI METER BOX Single/Three Phase multi meters

Material

- SMC and BMC
- Polycarbonate
- Mild Steel (Deep Drawn & Fabrication) v fire-resistant.



JUNCTION BOX

Features

- The Junction Boxes are protected with various level of INGRESS protection till IP-65
- The Applicable Standards are IS:13947(part-1) for ingress protection, Is:13410 for SMC Materials, IS:14772 for Enclosures.

Applications

- MPole Mounted Junction Boxes with Distribution Blocks
- Control Terminal Box or Aerial Fuse Box
- Wall mounted control panel

Material

- SMC and BMC
- Polycarbonate
- Mild Steel (Deep Drawn & Fabrication)



FRP GRATINGS

Features

- TCorrosion Resistant
- Slip Resistant gritted top surface
- Strong yet Lightweight
- Low Coefficient of Expansion and Contraction

Application

- Floor System & Walk Ways
- Work Platforms & Trench Covers
- Catwalk , Stairs & Ramps

Industry

- SChemical Fertilizers & Petrochemicals
- Power Plants, Fisheries & Textiles, Electric



SMC / FRP CHEQUERED PLATES

Features

- Ideal replacement for insulating Rubber mats at places like sub-stations, control rooms & trench Covers
- Anti-corrosive, light weight yet strong & Load bearing capacity as per IS
- Can withstand the load of breaker trolleys without obstructing their movement
- High Dielectric strength and life Expectancy
- Easy to fix on floor, Insulating Protection for life
- Confirms to IS 13410, BS5734, ASTM D5948, DIN 16913

Application

- Turnkey Contractors
- Electrical Control Rooms
- Railways & Industries
- Govt. & Commercial Complexes
- Contractors of Govt. Department



SMC FRP

Features

- TExcellent dielectric properties such as volume resistivity, surface resistivity, Arc resistivity and comparative tracking index.
- Can withstand continuous temperature up to 400 Degree C.
- Anti-corrosive and resistant to most acids, alkalis and chemicals
- Light weight, strong, Stiff & Clean or Weather Proof
- Self-coloured & maintenance free.
- NON-Hydroscopic and retains its dielectric properties even in presence of high humidity.



CABLE TRAY

Features

- TFire Retardant & Non-Conductivity
- Non-Magnetic & Light Weight
- Maintenance Free & Easy to install
- Corrosion proof
- Chemical Erosion proof

Industry

- Railways & Electrical / Utility
- Aerospace & Automotive, Roads & Highways
- Offshore & Oil & Gas
- Chemical Processing & Cooling Towers
- Construction Defense



FEEDER PILLARS

Features

Feeder pillars are manufactured from mild steel, Stainless steel & sheet Moulding compound as per customer requirements are used for distributing and managing various outgoing circuits with 1 or incoming with HRC Fuse links or Kitkatson outgoing side and option with or without ACB on the incoming side



Each product is engineered to meet stringent safety and quality standards, ensuring reliability in critical applications.



POLE MOUNTED STREET LIGHT BOXES

Features

- Good Corrosion and Weather Resistance
- High Physical and Mechanical Strength
- High Strength to weight ratio
- Highly Durable
- Lower thermal conductivity and Good adaptability
- & dimensional stability with UV resistance and Flexibility in design
- Light in Weight and hence easy to handle and install
- Ease of Maintenance with Zero Downtime
- Economical & cost effective.



FRP V-CROSS

Features

- Good Corrosion and Weather Resistance
- Anti-corrosive
- Ideal for harsh weather conditions
- No change in conductor formation/ configuration as well as ground clearance while replacing metal 'V' type cross arms of existing lines



BUS BARS

RMC provides Fully Insulated Bus Bars covered with SMC/ DMC/ Polycarbonate / Nylon as required by the customers are provided with Aluminum Bus Bars conductor.

Features

- Excellent mechanical protection
- Best possible barrier against humidity and moisture ingress
- Same bus bar system for indoor and outdoor application
- High stability under UV exposure
- Resistant to aggressive environments such as salt water, mineral oil, grease, fuels, weak acids and bases



Leveraging R&D, we continually refine our methodologies, introducing innovative solutions that set new benchmarks in the industry.



Solar Module & Solar Structure
details needed

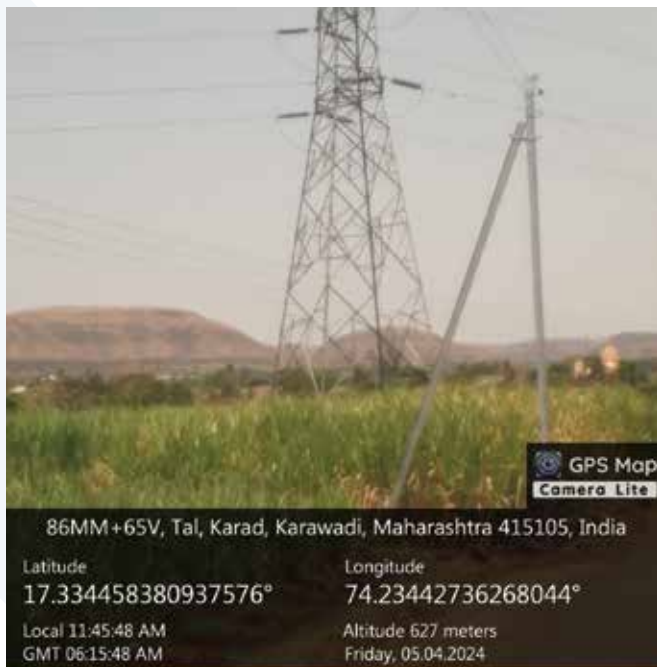


OUR FOOTPRINT ACROSS INDUSTRIES

Our R&D capacity focuses on designing new products through intensive studies and new findings. This process helps us to innovate further our mission of Electrical Safety in IndiRMC has successfully completed projects across India and internationally, serving a diverse range of clients:

Turnkey Projects:

1. Paschim Gujarat Vij Company Ltd.(PGVCL)
2. Jodhpur Vidyut Vitran Nigam Ltd.(JDVVNL)
3. Hubli Electricity Supply Company Ltd.(HESCOM)
4. Chhattisgarh State Power Distribution Company Ltd.(CSPDCL)
5. Bangalore Electricity Supply Company Ltd.(BESCOM)
6. Mangalore Electricity Supply Company Limited(MESCOM)
7. Goa Electricity Department (GED)
8. Chamundeshwari Electricity Supply Company Ltd.(CESCOM)
9. Maharashtra State Power Generation Co. Ltd. (MAHAGENCO)
10. Maharashtra State Electricity Distribution Company Limited





OUR R&D & INNOVATIONS

Smart Metering Enclosures

Eliminates any chance of meter theft and tampering while increasing the life of the meter



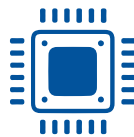
FRP Fencing

Minimises electrical fire occurrences in distribution transformers by protecting against un-authorized person or animal entry



RP Transformer Busing Covers

Helps in reducing electrical theft by providing protection to the open busing of transformers.



Control Units

Reduces unauthorised tapping of overhead lines and connections of distribution boxes



Multi-meter Boxes

Increases utility accessibility in incoming and outgoing power connections to minimise electrical theft in congested areas and townships



FRP V Cross Arms

Replacement of traditional metal cross arms that cause electrical accidents due to rusting and breaking of the wire



WE LOVE THE MOST: OUR CLIENTS



CERTIFIED FOR EXCELLENCE

RMC is proud to hold certifications and approvals from major entities:



Certifications:
ISO-90012008, 5S Kaizen



Approvals:
From Power Grid, NTPC, and
REC-funded projects



Awards:
Recognition for innovation
& sustainability initiatives.

COMMITTED TO A GREENER FUTURE

We are a growing player in the renewable energy sector, with a strong focus on solar power generation. Our key projects include:

Solar Park Development

We are currently developing a 60 MW solar park in Jodhpur, Rajasthan. This project is a significant step toward increasing renewable energy capacity in the region.

KUSUM Scheme:

We are participating in the Pradhan Mantri Kisan Urja Suraksha Evam Utthan Mahabhiyan (PM-KUSUM) scheme with a 41 MW solar project in Maharashtra. This initiative supports solar power generation in rural areas and promotes sustainable energy solutions for farmers.

Additionally, we have 200 MW of solar projects in the pipeline, which are under evaluation and expected to be awarded soon. These projects will further expand our contribution to India's renewable energy capacity.



GREEN INITIATIVES

RMC: SOLAR

Renewable Energy Integration

We have invested significantly in renewable energy, highlighted by our new 249 kW solar plant at our manufacturing facility. This initiative reduces carbon emissions and supports India's target of 450 GW of renewable energy by 2030.

Environmental Sustainability Initiatives

RMC's Environment and Resource Protection program includes solar energy generation, water conservation drives, and plantation initiatives. These efforts ensure our emissions and waste remain within regulatory limits.

Commitment to Sustainability and Governance

Our corporate governance framework prioritizes sustainability, ethical practices, and stakeholder responsibility. We integrate sustainability into our core operations and adhere to ISO 9001:2015, maintaining safe and clean operations. Provide Photos if any for this section, other than Solar Plant.

RMC is dedicated to reducing carbon emissions through sustainable manufacturing and eco-friendly products like solar solutions and FRP gratings. We align with global initiatives to support a cleaner, greener planet.



VISIONARIES BEHIND RMC'S SUCCESS



Ashok Agrawal
CMD



Ankit Agrawal
CEO WTD



Mr. Sushir Bishnoi
Business Head



Manish Mantri
COO



Anand Chaturvedi
CFO



Aditya Tiwari
HEAD-SBU (Renewable
Energy & IOT)



Akhilesh Kumar Jain
Executive Director



Sajal Ghosh
CGO

WE ARE BORN TO GROW!

As we continue our journey, our expanding business profile will be fuelled by innovation, strategic partnerships, and a relentless drive to power India's future sustainably and efficiently.

Ambitious Growth Vision

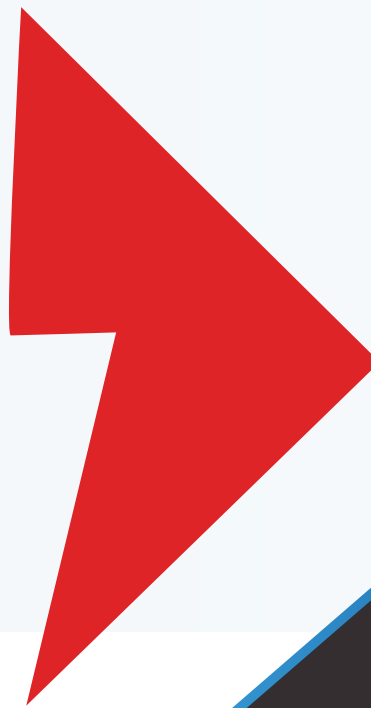
Our aspirations are not bound by the present. Aiming for a growth rate of over 30% CAGR in the upcoming 3-5 years, we're setting the stage for unparalleled expansion and reach.

RMC's New Horizons: Diving into Water Management

In 2024, we successfully launched a new subsidiary, holding a 51% majority stake, which represents a major advancement in the field of Water IoT Solutions.

Intelligent Hydrel Solutions aims to innovate in the domain of smart devices and hardware for water, gas, and electrical solutions, focusing on IoT-based applications for both low voltage and high voltage electrical systems.

As with our endeavours in the power sector, our foray into water management comes with a commitment: to innovate, to empower, and to ensure a sustainable future for India.





LET'S CONNECT

- **Corporate Office:**

B-11 (B&C), Malviya Industrial Area,
Jaipur – 302017, Rajasthan, INDIA
Phone: +91-141-4400222 | Email:
admin@rmcindia.in

- **Website**

www.rmcindia.in

- **Manufacturing Unit:**

7 Kms from Chaksu, Kotkhawda
Road, Village Badodiya, Tonk Road,
Jaipur – 303901, Rajasthan, INDIA



SWITCHGEARS LTD